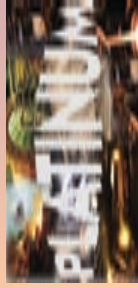


Contents

	Page No
INVITATION MESSAGE FROM THE ORGANISING COMMITTEE	2
ORGANISING COMMITTEE	3
CONFERENCE SECRETARIAT	3
KEY DATES	3
REGISTRATION FEES	3
CANCELLATION	4
EXCHANGE RATE	4
CONFERENCE VENUE	4
CONFERENCE PROGRAMME	5
PRELIMINARY TECHNICAL PROGRAMME	5-9
TECHNICAL VISITS	9
SOCIAL FUNCTIONS	10
GENERAL INFORMATION	
Accommodation	10
Banking/Credit cards/Foreign exchange	11
Car rentals	11
Climatic conditions	11
Currency	11
Duty-free allowance	12
Electricity supply	12
Flight information	12
Information desk	12
Language	12
Lunches and refreshments	12
Speed limits	12
Standard time	12
Tipping	13
Tourism	13
VAT	12
Waiver of liability	13
MAP TO SUN CITY	14



Invitation Message from the Organising Committee

Dear Delegate

Platinum production in Southern Africa amounted to 80% of world production in 2005 with a small increase from 5 117 000 ounces to 5 275 000 ounces. For the seventh consecutive year the platinum market is on course to record a moderate deficit in supply. This is reflected in the price increase from a trading range US \$860 to US \$880 in June 2005 to pushing US \$1 000 in November 2005. Southern Africa, with its extensive platinum reserves, will continue to be the dominant platinum producer and has a number of new mines in an advanced stage of planning.

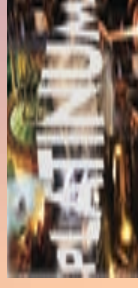
This conference will cover all aspects of platinum mining from exploration and orebody delineation, through mine development and operation to mine closure; mineral beneficiation, marketing and compliance with the Mining Charter will also be subjects for discussion and debate. It is also anticipated that the issue of overall increases in productivity, through the introduction of technology, will demonstrate Southern Africa's status as a premier mining district. The slogan 'Platinum Surges Ahead' was selected to describe the exciting and vibrant nature of all aspects of platinum mining, beneficiation and marketing.

I am sure that we can count on your valued participation at the conference and we look forward to seeing you at Sun City in October.

Mike H. Rogers
Chairman
Organising Committee



Photographs courtesy of SA Tourism



Organising Committee

- M.H. Rogers (Chairman)
- F.M.G. Egerton
- K.J. Hay
- L. Jagger
- R.T. Jones
- J.C. Ngoma
- T. Pegram
- F.W. Petersen
- R.G.B. Pickering
- J.L. Porter
- J. Theron
- H.G. Waldeck

Conference Secretariat

Lara Winning
The South African Institute of Mining and Metallurgy
P O Box 61127, Marshalltown, 2107, South Africa
Tel: +27 11 834 1273/7 · Fax: +27 11 838 5923 or 833 8156
E-mail: lara@saimm.co.za · Web: <http://www.saimm.co.za>

Key dates

- Deadline for papers 31 May 2006
- Deadline for early-bird registration 1 August 2006
- Final PowerPoint® presentations due 2 October 2006
- Pre-registration and Exhibition set-up 8 October 2006
- Conference dates 9-11 October 2006
- Technical visits 12 October 2006

Registration fees

Registration fees include attendance at the technical sessions, all refreshments and lunches at the Conference, attendance at the Cocktail Party and the Banquet.

Early registration fees (on or before 1 August 2006)

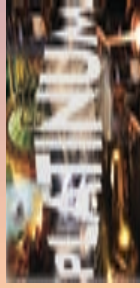
- Delegates or Presenting Authors R5 700.00
- Non-Members R6 840.00
- Students R1 140.00

Registration fees (after 1 August 2006)

- Delegates or Presenting Authors R6 270.00
- Non-Members R7 410.00
- Students R1 710.00

'Platinum Surges Ahead'

8–12 October 2006



All prices are inclusive of VAT. Tax invoices will be issued to all delegates.

Please note that delegates will only be permitted to attend the Conference if their registration fees have been paid.

To register on-line please use the following website:
<http://www.saimm.co.za/platinum>

Cancellation

A 50% refund will be made for cancellations received before 1 September 2006. No refunds will be made for cancellations on or after 1 September 2006.

Exchange rate

The current exchange rate as at May 2006 is approximately US\$ 1.00 = R6.21, GBP£1.00 = R11.53 and Euro = R7.94.

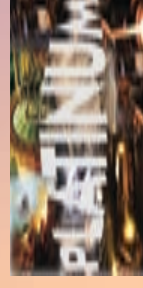
The present rate of VAT (value added tax) is 14%, which is included in the cost.

Conference venue

Nestled in the rolling hills of the Pilanesberg, one of South Africa's most scenic locations, Sun City is a world unto itself and has earned its reputation as Africa's Kingdom of Pleasure.

You will find whatever you want at Sun City, from sizzling entertainment, world-class casinos and restaurants to cater for all tastes, to the more relaxed poolside venue, quiet places, lush gardens, and extensive sporting facilities including two world-class golf courses. These are just some of the elements that make Sun City unique among the world's entertainment resorts.

Finally re-discovered and now part of Sun City, the Lost City and the Valley of Waves, fabled to be the Ruins of a glorious ancient civilisation, celebrate and bring to life the legends of this mystical city. The Lost City is internationally applauded for its wonderfully imaginative theme and exquisite landscaping whilst the fantastic Valley of



'Platinum Surges Ahead'

8–12 October 2006

Waves is one of the world's most exciting waterparks.

The Conference will be held in the Pilanesberg B Omega room in the Conference Centre at Sun City.

Conference programme

The conference will start with plenary sessions on the morning of Monday 9 October. Parallel sessions will be held all day Tuesday 10 October. The Conference will officially close at approximately 16:00 on Wednesday afternoon.

Technical visits will take place on Thursday morning, 12 October 2006.

Preliminary Technical programme

The technical programme comprises opening and closing addresses from invited and designated keynote speakers, as well as papers.

Papers will be presented in the following categories:

1. Exploration and orebody delineation
2. Project valuation and funding
3. Current and future mine design and layout
4. Current and future mining operations
5. Mineral processing, smelting and refining
6. New technologies for mining and processing
7. Mining Charter and legislation
8. Platinum marketing, uses and applications
9. Environment and sustainability.

The following abstracts have been provisionally accepted:

Adding value to downstream processing with an Innovative Fine Screening Methodology
 D. Allaei, A. Morison, C. Jones, R. Lohry, and G. Carradi (T. Gazis), USA

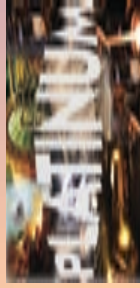
The development of ultra fine grinding at Anglo Platinum

A. Anyinadu, L. Knopjes, and C. Rule, SA

Ventilation strategies to meet the needs of the South African platinum industry in the 21st Century

M. Biffi, SA

8–12 October 2006

**Underground mine profiling**

D. Bornman, SA

Underground belt coiling device

P. Botes, SA

Interpreting the role of readents in the flotation of Platinum bearing ores

D. Bradshaw, M. Becker, J. Wiese, P. Harris, SA

The application of multi-parametric block models to the mining process

A. Bye, SA

Anglo Platinum: taking advantage of the current metal prices and shortage of platinum

G. Chunnet, SA

Upgrading the Impala Concentrate Handling Facility

V. Coetzee, A. Paterson, and F. van Sittert, SA

Theft of precious metals within South Africa

S. Conradie and E. Magnus, SA

Building a database for the prediction of phases in Pt-based superalloys

L.A. Cornish, R. Süss, A. Watson, and S. Prins, SA

New Pt-based alloys for high temperature application in aggressive environments: The next phase

L.A. Cornish, R. Süss, L.H. Chown, A. Douglas, M. Matema, L. Glaner, and M. Nzula, SA

Innovative smelter technology for the platinum industry

R. Degel, J. Kempken, A. Warczok, and T. Schreiber, Germany

End-users, recyclers and producers: shaping tomorrow's PGM market and metal prices

S. Forest, SA

Improving cost efficiency on mechanised mining

B. Ghore, SA

Quality of PGE fire assays using spark analysis on lead buttons

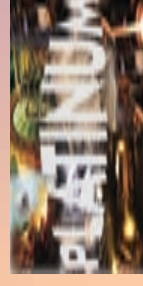
P. Hofmeyr, SA

The Implementation of No's 16 and 20 Shaft Projects

L. Jagger, SA

Application of the Kelsey Centrifugal Jig to improving recoveries in the Platinum Industry

T. Jones, (W. Erasmus), SA



8–12 October 2006

Dense media separation application to PGM Industry

G. Kleynhans, P. du Plessis and C. Rule, SA

Lateral distribution of the UG2, the Merensky Reef, the Platreef and analogous deposits of the Bushveld Complex: new opportunities for exploration

F.J. Kruger, SA

The application of facies modeling in evaluating the Merensky Reef at Bafokeng Rasimone Platinum Mine (BRPM)

M. Lionett, SA

Two Rivers Platinum Mine, the orebody, the mining method; A perfect match

M. Mabuza, SA

Hot corrosion behaviour of Pt-alloys for application in the next generation of gas turbines

N. Maledi and J.H. Potgieter, SA

The implementation of mechanized breast mining at Lonmin Platinum

M. Moxham, M. Schmidt, and R.G.B. Pickering, SA

The implementation of mechanized development with the Loco Drill and the Box Hole Borer

B. Mulligan and B. McKeown, SA

Technical operating flexibility in the analysis of mine layouts and schedules

C. Musingwini, R.C.A. Minnitt, and M. Woodhall, SA

Replacement of the existing Merensky Reef Operations at Lebowa Platinum Mine: An integrated business and operational readiness approach

O.Y. Ntrama, SA

Advancements in technology drive change in how ores are liberated

K. O'Bryan, USA

Mining with rockcutting in narrow reefs

R.G.B. Pickering, A. Smit, A. Mauve, SA

Long hole drilling applied to narrow reef mining

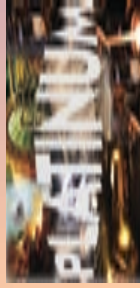
R.G.B. Pickering, SA

Oxygen activity measurements in simulated converter matte

C. Pistorius and K.G. Tshilombo, SA

'Platinum Surges Ahead'

8–12 October 2006

**Platinum alloy development—The Pt-Al-Cr-Ni system**

J. Preussner, M. Wenderoth, S. Prins, R. Volkl, U. Glatze, Germany and USA

Next generation project management in the Platinum Industry

H.W. Read, SA

3D surface seismic, a tool to help resource evaluation for a PGM mine project

D. Reeves, M. Gibson, E. Gillot, and M. Denis, SA

Broad-based socio-economic empowerment charter for the South African mining industry

M. Roberts, SA

Technologies for emissions reduction in the metallurgical and chemical process industries

D. Schreude, SA

Project valuation, capital investment and strategic alignment—tools and techniques at Anglo Platinum

G.L. Smith, SA

The evolution of strategic long term planning at Anglo Platinum

G.L. Smith, J. Pearson-Taylor, and D.C. Andersen, SA

Risk factors in project evaluation and implementation

O.K.H. Steffen, H.G. Waldeck, SA

Unique performance contract complements mining layout at Waterval

M. Stiglingh, SA

Macro economic aspects of the SA Platinum industry

L.C. Stilwell, SA

Ounces into pounds—How much is an in situ ounce of platinum worth?

A. van der Merwe, SA

An alternative to equipping vertical shafts

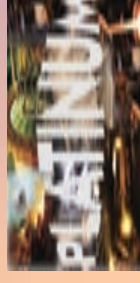
S. van der Watt and M.J. Watt, SA

Intelligent Gearing System

D. van Dyk, (D. Brown to present), SA

A review on the progress towards Pt-base Superalloys for ultra high temperature applications

R. Volkl, M. Wenderoth, J. Preussner, S. Vorberg, B. Fischer, and U. Glatzel, Germany

**'Platinum Surges Ahead'**

8–12 October 2006

Overview of the high-temperature mechanical properties of Pt-alloys

S. Vorberg, Germany

Trithiocarbonates for the flotation of PGM sulphides

F. Vos, J.C. Davidtz, J.D. Miller, SA and USA

Merensky Reef faces distribution and statistics—Wesizwe Platinum Ltd

D.R. Young, SA

Technical visits

Please note that all tours are subject to a **minimum** number of participants. Should this not be achieved, the organisers reserve the right to cancel the tour. All bookings will be handled on a 'first-come-first-served' basis. **Please be so kind as to indicate a second and third choice of visit to avoid disappointment. The cost is R250.00 per technical visit. All tours return to Sun City.**

Thursday 12 October 2006**Day Trip 1: Visit to an Underground Mechanised Mining Operation in the Rustenburg vicinity**

The UG2 Reef is mined by mechanised mining methods at some of the operations in the Rustenburg area. The underground visit will be limited to 15 persons on each of the tours.

Day Trip 2: Visit to an Open Pit Mining Operation in the Marikana/Mooiwool vicinity

The Merensky and UG2 Reefs are mined by open pit mining methods from the outcrop to depth of about 40 m. The visit will allow the whole process to be seen including backfilling and rehabilitation.

Day Trip 3: Visit to a Concentrator and Smelter in the Rustenburg vicinity

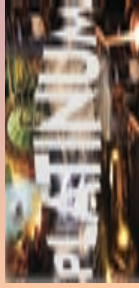
The visit will include the concentrating and smelting facilities on one of the mines where both Merensky and UG2 Ores are treated.

Day Trip 4: Visit to a Base Metals and Precious Metals Refinery

The visit will include both the Base Metals and Precious Metals refining facilities.

'Platinum Surges Ahead'

8-12 October 2006

**Social functions****Sunday, 8 October 2006****Welcoming Cocktail Party**

This function will serve as an 'ice breaker' for delegates who register early for the congress, and will take place in the Hall of Treasures in the Conference Centre at Sun City.

Cost: included in Congress registration fee.

Please indicate your attendance on the registration form for catering purposes.

Wine, malt and soft drinks will be served. A cash bar will be available.

Time: 17:00-20:00

Dress: Smart casual

Monday, 9 October 2006**Leisure Evening**

No formal arrangements have been made for delegates.

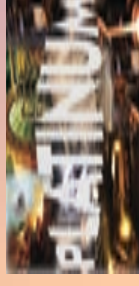
Tuesday, 10 October 2006**Gala Dinner**

The gala dinner, which is the primary social function, will be held at the Valley of the Waves. In line with the venue, this function will be a barbeque on the 'beach'. Grass mats and backrests will be provided. Entertainment has been arranged. Wine, malt and soft drinks will be served. A cash bar will be available.

Dress: Casual, beachwear.

General information**Accommodation**

Please note that special rates and block bookings have been negotiated at the Conference Venue. Kindly contact Sun International Central Reservations as per the enclosed accommodation reservation form, quoting the Group ID number. Any bookings made after 10 September 2006 will be subject to availability. Shuttles will be available to transport delegates from the hotels to the Conference Centre.

**'Platinum Surges Ahead'**

8-12 October 2006

Banking / Credit cards / Foreign Exchange

There are a number of banking institutions that are affiliated with international banks in all major centres in South Africa. Major credit cards are generally accepted throughout South Africa.

American Express Tel: +27 11 359 0200,

Diners Club Tel: +27 11 358 8400,

Master Card and Visa Card Tel: +27 11 498 4699.

The following banks offer foreign exchange services: ABSA, First National, Nedbank and Standard. Banks and automatic teller machines (ATMs) are found in every city and in most towns. Several international banks have branches in the main cities. Most commercial banks are open from 09:00 to 15:30 on weekdays and 08:30 to 11:00 on Saturdays.

Car rentals**Avis Rent a Car** - Central Reservations

Tel (Intl): +27 11 923 3500, Fax (Intl): +27 11 923 3683, Toll-free: 08 000 21111

Budget Rent a Car - Central Reservations

Tel (Intl): +27 11 392 3929, Fax (Intl): +27 11 392 3900, Toll-free: 08 600 16622

Europcar Interrent - Central Reservations

Tel (Intl): +27 11 396 9000, Fax (Intl) +27 11 396 1406, Toll-free: 08 000 11344

Imperial Car Rental - Central Reservations

Tel (Intl): +27 11 453 0005, Fax (Intl) +27 11 453 6278, Toll-free: 08 610 13100

As a rule, hired cars may not be driven across the border to other African countries.

Climatic conditions

October is springtime in South Africa, with warm days and slightly cooler evenings. Delegates should pack a light jacket or pullover.

Currency

One rand (R) = 100 cents (c)

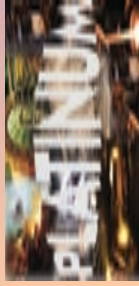
Notes issued include: R200; R100; R50; R20; R10

Coins issued include: R5; R2; R1; 50c; 20c; 10c; 5c

You are permitted to take R500 in SA rand notes out of the country, thereafter a levy is charged on the additional amounts.

'Platinum Surges Ahead'

8-12 October 2006

**Duty-free allowance**

You may bring the following into South Africa:

Wine - 2 litres	Perfume - 50 ml	Cigarettes - 400
Spirits - 1 litre	Tobacco - 250 g	Cigars - 150

Please confirm these allowances at the airport of your departure.

Electricity supply

The electricity supplied in South Africa is 220 to 240V (50Hz)—3 x round pin 15 amp plug. Hotels usually provide dual voltage 2-pin razor sockets (100-120V and 220-240V).

Flight information

International flight times are available from the Airports Company of South Africa under Flight Info or call (011) 921 6262. Transfers from the airport can be arranged through your hotel.

Information desk

An information desk will be staffed daily in the conference office from 07:30 to 17:30.

Language

The language of the Conference will be English.

Lunches and refreshments

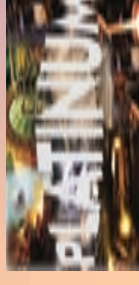
The cost of the lunches and morning and afternoon refreshments during the Conference is included in the registration fee.

Speed limits

Freeways – 120km/h urban roads – 60 km/h. Drivers and all passengers must wear seatbelts. Drivers must carry their drivers' licence at all times.

Standard time

Also known as Central African Time (CAT). There is no daylight saving in South Africa. Sunrise in October is around 06:00 local time and sunset is around 18:30 CAT = GMT + 2 hours, or CET + 1 hour, or EST +7 hours.

**'Platinum Surges Ahead'**

8-12 October 2006

Tipping

According to service, but as a guideline: Restaurants and Taxi Drivers = 10%, Porters = R5.00.

Tourism

South Africa is billed as being a world in one country, and has a huge variety of attractions, from its game reserves and scenic attractions to its vibrant cities. Further details can be obtained from the offices of the South African Tourism Board in your country or telephone +27 11 778 8000 or facsimile +27 11 788 8001 or e-mail to jhbsatourism.com for further information. Websites of interest:

<http://www.sa-venues.com/gauteng.htm>

<http://www.a-away.co.za/provinces/gauteng/index.htm>

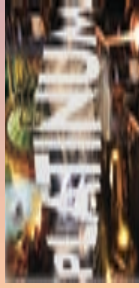
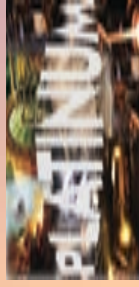
<http://travel.iafrica.com/index.htm>

VAT

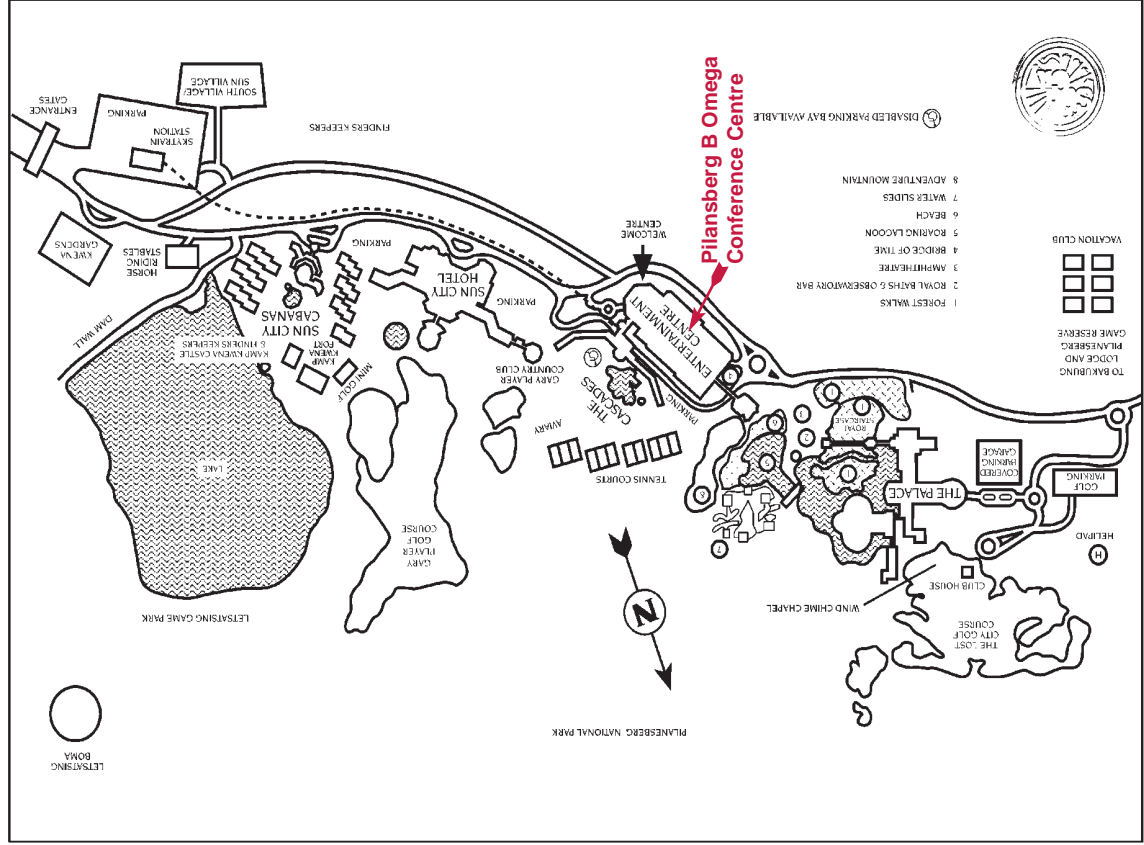
The present rate of VAT (value added tax) is 14%, which is included in the cost of most items. On their departure, overseas delegates can claim back the VAT paid on some purchases taken out of the country. You will be required to produce a VAT invoice for those items where VAT is to be claimed back, at the airport of departure.

Waiver of liability

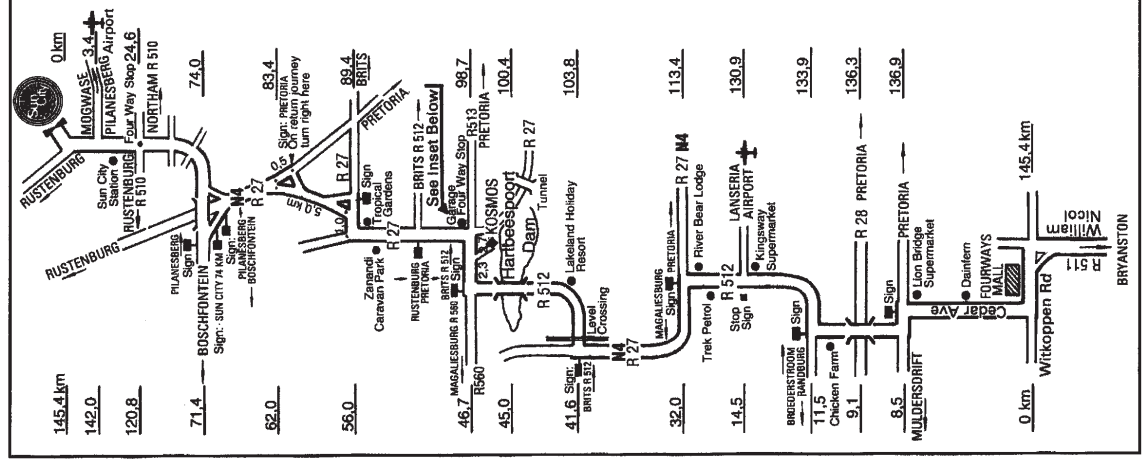
The Conference organisers have taken reasonable care in making the arrangements for the Conference, including technical visits and the workshop. The organisers do not accept liability for any loss or injury sustained, or for unforeseen changes to the programme. The organising committee reserves the right to cancel any tour or visit due to insufficient interest.



SUN CITY RESORT MAP



RECOMMENDED ROUTE TO SUN CITY



OUTWARD BOUND

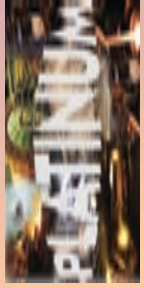
Travel north along William Nicol Drive to Fourways intersection at Witkoppen Road. Turn left into Witkoppen Road passing Fourways Mall on your right. At first set of lights turn right into Cedar Avenue. Proceed for 8.5km to T-junction. Lion Bridge Supermarket is on the right. Turn left and take first right-hand turn. Proceed 2 km to T-junction, passing over the R28 freeway. Chicken farm is on your left. Turn right at the T-junction into R512. Carry on until the next T-junction (R27) passing Lanseria Airport turnoff. Turn left on the R512 to Magaliesburg. 9.4km further on, turn right (R512) towards Brits. Cross the railway line and onto the bridge over Hartbeespoort Dam. At the T-junction turn right (R512) to Brits. Travel to a major 4-way stop. Turn left towards Brits and Rustenburg. Pass the first turn-off to Brits. Travel straight on, passing Tropical Gardens on the right. Pass the R27 road on the right and the signboard: Sun City 89km. Travel straight on for approximately 10km until you reach the signboard: Sun City 79km. Turn right and cross over the highway, and you are on the direct road to Sun City.

HOMeward BOUND

Leaving the Sun City complex turn left and travel the direct route for 79km. At the T-junction turn left and travel towards the Hartebeespoort Dam for approximately 15km to the major 4-way stop. Turn right. Travel 5km and turn left on the R512 to Randburg crossing the bridge over the Hartbeespoort Dam. At the T-junction turn left (R27) to Pretoria, (R512) to Randburg. 9.6km further turn right on the (R512) to Lanseria Airport. Pass the Lanseria Airport turnoff and travel 3km and at that junction turn left. Proceed past the chicken farm on your right. Cross over the (R28) freeway to the T-junction. Turn left and then first right and proceed to the Fourways Mall.

DIRECTIONS FROM PRETORIA

Select N4, R27, R514 or R513 to the 4-way stop intersection just beyond the tunnel at Hartbeespoort Dam. Follow directions from this intension as detailed on this route map.



Second International Platinum Conference

'Platinum Surges Ahead'

8-12 October 2006